



Guidelines for Contributors / Editorial Policy

The journal will include thematic and empirical research papers in the field of Business, management and allied areas, with emphasis on pragmatic orientation.

Before submitting the paper for publication, please ensure that this paper has not been sent for publication or published elsewhere until you receive a communication from our side. Once a manuscript is submitted for publication, it will be screened by the editor to check for the fitness of the paper for publication in the journal. After the preliminary screening it will be blind reviewed by two independent national and international reviewers for the scientific merit, readability and interest. Unaccepted manuscript will not be returned, however, you will be communicated accordingly.

The manuscript should be neatly typed in single space on an A -4 sheet with 1 inch space on all sides in 12 Times Roman size font. The manuscript can be of up to 5500 words, or maximum 20 pages.

The references should be in American Psychological Association format APA, 6th Edition:

Reference from Journal:

Alkaike, H. (1987). Factor analysis and AIC. *Psychometrika*, 52, 317 -332.

Reference from Edited book:

Browne, M. W. & Cudeck, R. (1999). Effects of Organizational Climate and Citizenship Behavior on Organizational Effectiveness. In K.A. Bollen & J.S. Long (Eds.) *Human Resource Management* (pp. 136 -147). Newsbury Park, CA: Sage.

Reference from Book:

Luthans, F. (2002). *Organisational Behaviour*. New Delhi: McGraw -Hill International.
Booth, W. C., Colomb, G. G., & Williams, J. M. (1995). *The craft of research*. Chicago: University of Chicago Press.

Reference from online resources:

Hacker, D. (1997). *Research and documentation in the electronic age*. Boston: Bedford Books. Retrieved October 6, 1998, from <http://www.bedfordbooks.com/index.html>
Morse, S. S. (1995). Factors in the emergence of infectious diseases. *Emerging Infectious Diseases*, 1(1). Retrieved October 10, 1998, from <http://www.cdc.gov/ncidod/EID/eid.htm>

Smith, E. E. (2001). Internet term paper mills: The case for mandatory expulsion [Electronic version]. Journal of Crime and Punishment, 6, 123 –139.

Newspaper Article

Goleman, D. (1991, October 24). Battle of insurers vs. therapists: Cost control pitted against proper care. New York Times, pp. D1, D9.

Newspaper Article (Online)

Markoff, J. (1996, June 5). Voluntary rules proposed to help insure privacy for Internet users. New York Times. Retrieved April 1 , 1996 , from

<http://www.nytimes.com/library/cyber/week/yo5dat.html>

Newspaper Article (No Author)

Undisclosed settlement reached out of court in Michigan Biodyne civil suit. (1992, March 1). Psychiatric Times, p. 16.

Conference Paper (Published):

Kuroda, S. Y. (1988). Whether we agree or not: A comparative syntax of English and Japanese. In W. J. Poser (Ed.), Papers from the second international workshop on Japanese syntax (pp. 103–143). Stanford, CA: CSLI.

Dissertation:

Downey, D. B. (1992). Family structure, parental resources, and educational outcomes. Ph.D. dissertation, Department of Sociology, Indiana University, Bloomington, IN.

Checklists to be adhered to:

1. Cover Letter with a note on Title, originality of work with undertaking for submitting unpublished manuscript for publication.
2. Title: Short & Crisp (24 font Size).
3. Abstract of max 150 words, followed by (five) keywords
4. Author/ s full name with designation and institutional affiliation and a brief description about them on a separate sheet of paper
5. Tables and figures should be given in the end, numbered serially.

Subscription Rates	In India, Nepal & Bhutan (INRs)		Other Countries (US \$)	
	1 Year	5 year	1 year	5 year
For Individuals	Rs. 800	Rs. 3000	100	400
For Institutions	Rs. 1200	Rs. 5000	150	600

Manuscript Submission:

Please email all manuscripts in the (MS-word) Doc format to editor@ksom.ac.in
Inquiries for current and back issues: The queries can be addressed to editor,
Parikalpana: KIIT Journal of Management, School of Management, KIIT
University, Bhubaneswar 751024 India, or email to editor@ksom.ac.in.

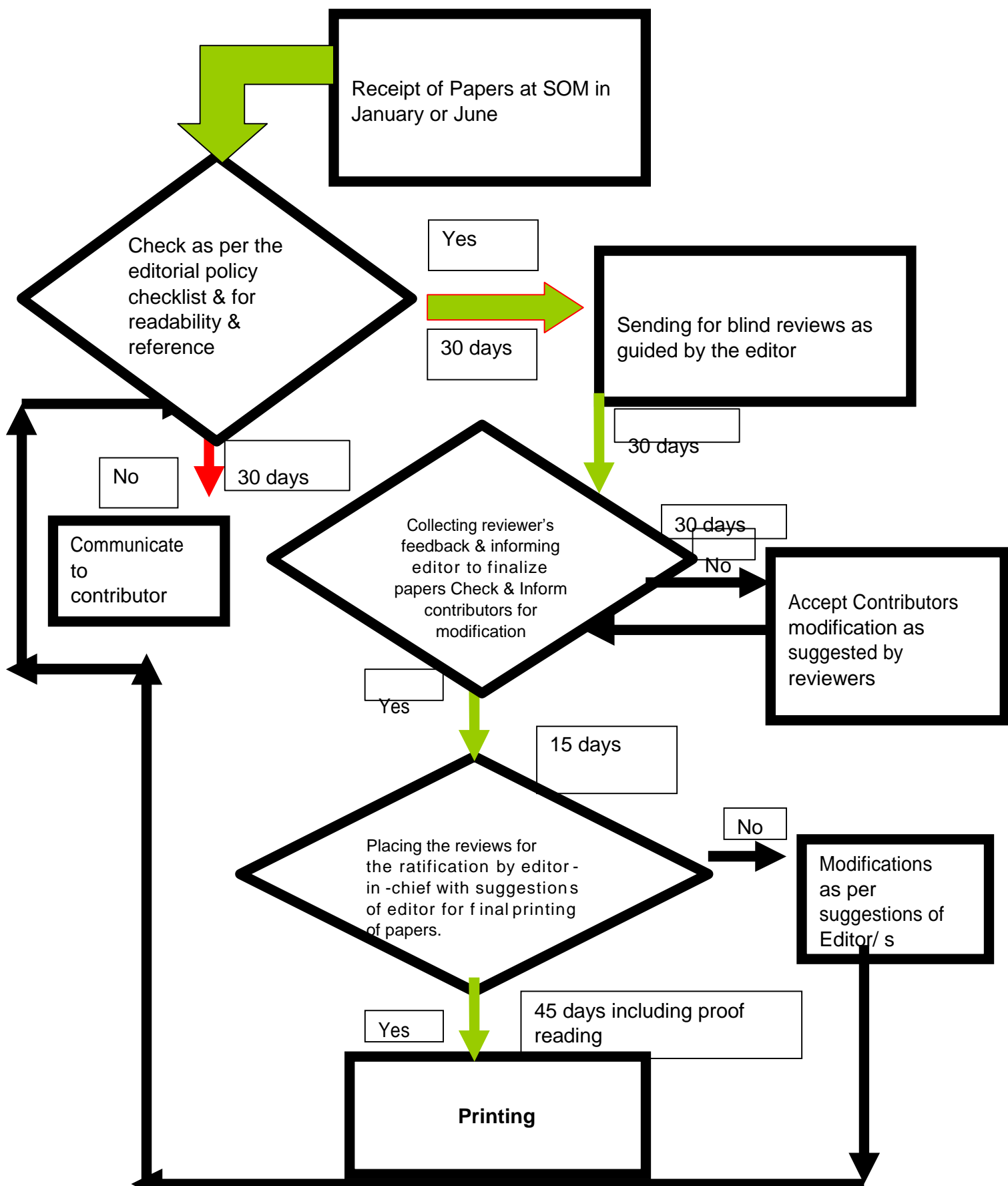
[Note: authors can avail online submission facility, to be introduced shortly.]

How to Subscribe KIIT Journal of Management

The journal is Bi-annual and can be subscribed by sending the filled in form with appropriate demand draft of any nationalized bank drawn in favor of KIIT University, Bhubaneswar, payable at Bhubaneswar. Please add Rs. 50 for outstation cheques. The subscription fee includes mailing charges.

The Subscription should be sent to:

The Editor, *Parikalpana*: KIIT Journal of Management, School of Management, KIIT University, Bhubaneswar – 751024, India.



Flow Chart for Editorial Process in Parikalpana KIIT Journal of Management